

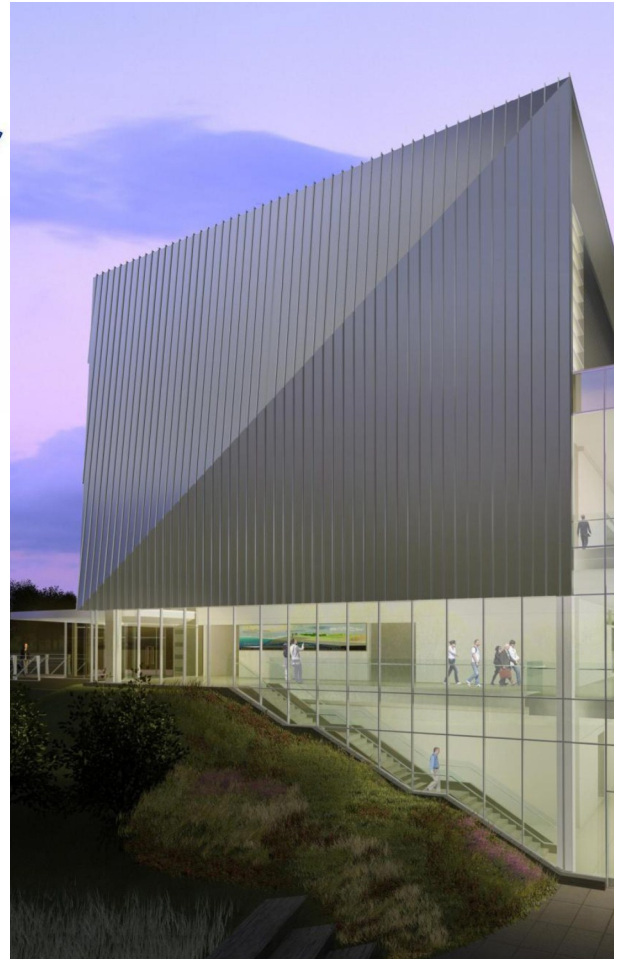
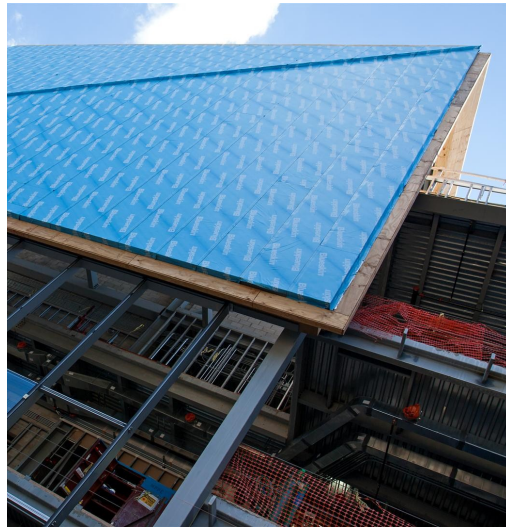
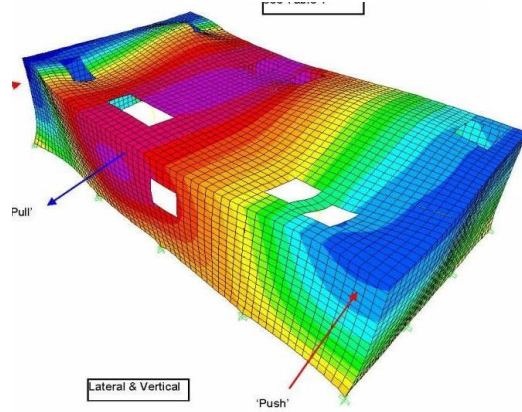
Location
Ann Arbor, MI

Project Size
63,000 SF

Completion Date
2013

Owner
University of
Michigan

Architect
Integrated Design
Solutions



G.G. BROWN LABORATORY BUILDING ANN ARBOR, MI

The GG Brown project consists of a 63,000 SF, \$40-million laboratory building addition for the University of Michigan Mechanical Engineering Department. The 4-story addition to the existing GG Brown Laboratories will house research space for nanotechnologies. The building's structural system is steel framed, using concrete on composite metal deck and composite steel beams and girders. The primary foundation system was straight shaft drilled concrete piers. Lateral loads were resisted by a

combination of braced frames, moment frames, and concrete shear walls. The building is one of only three buildings in the country designed to meet the strict standards for Ultra-Low Vibration Labs that are housed on the first floor.